



When you need a compact,  
self-contained cabinet  
X-ray system to provide the  
sharpest images.

## The XPERT<sup>®</sup> 20 Cabinet X-ray System

Equipped with the largest detector available in a compact unit.

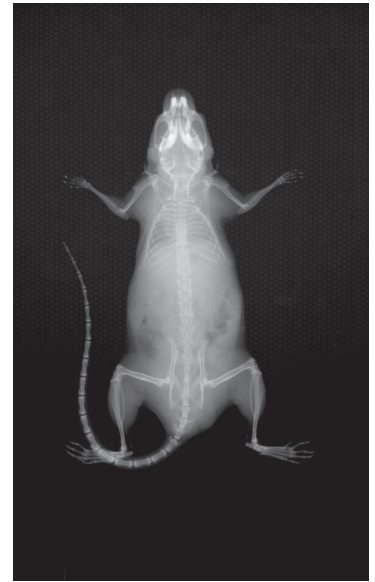
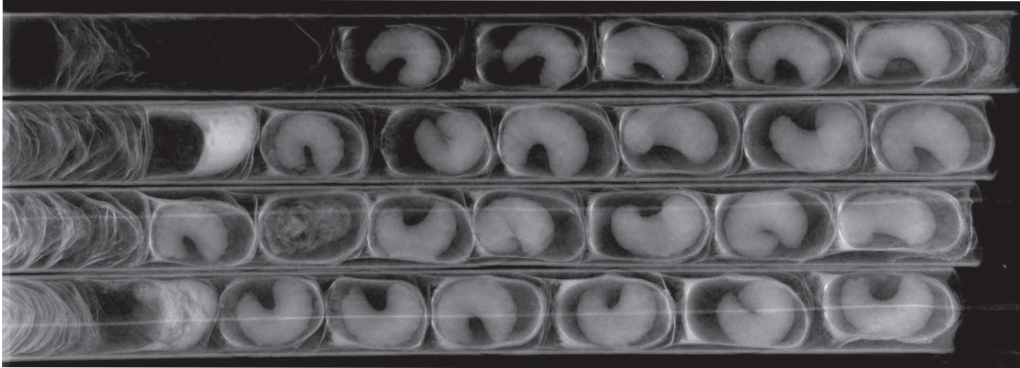
Rapid image acquisition and a powerful software suite bring detail and efficiency to your image analysis.

### **XPERT<sup>®</sup> 20 System Features:**

- AEC based fully automated digital imaging with manual option included.
- Automatic calibration with zero warm up time.
- Ability to save annotated images in multiple formats.
- Contact and 1.5X geometric magnification.
- Bench-top or mobile platform option for easy transportation.
- Seed counting software available.
- Plugs into standard wall outlet.

# The XPERT<sup>®</sup>20

## Cabinet X-ray System



### Specifications

Detector Size	3" x 5" (7 cm x 12 cm) CMOS 16-bit
Spatial Resolution	49.5 micron/contact mode, 33 micron/magnification mode, 15 lp/mm
Tube Energy Range	10-25 kV / 50 kV Air Cooled
Tube Current	up to 1.0 mA
Window Filtration	0.005" beryllium (0.125 mm)
Power	90-250 VAC, 50/60 Hz, 400 VA
Wireless Connectivity	Standard
Size (W x D x H)	11" x 12" x 20" (28 x 30.5 x 51 cm)
Weight without cart	70 lbs. (32 kg)
Weight with cart	170 lbs. (77 kg)
Software	Image Analysis, Seed Counting



\*Please see our website at any time for continued updates of specifications and product offerings.

# KUBTEC

SCIENTIFIC

Specifications subject to change without notice. Kubtec and the Kubtec logo are registered trademarks of KUB Technologies, Inc. M1260B-01117

WWW.KUBTEC.COM    